



GPSFOREXROBOT.COM

USER GUIDE

GPS Forex Robot

Version 1.0

GPS Robot License Agreement

All contents of this manual are neither an endorsement, nor a solicitation of any sort, and cannot be considered as a promotional offer. All information you receive is unsolicited, private encoded communications of privileged, proprietary, and confidential information for you only and by purchasing the given product you agree to keep this information private, confidential, and protected from any disclosure. You also agree to indemnify and hold harmless the authors of this product, their employees, contractors, and service providers. Should any of the practices described herein turn out to be unlawful in any jurisdiction, individuals pursuant to its legislation should restrain from any intentions or attempts to apply them in any manner, either personally or in partnership with other individuals or entities. Unauthorized copying and distribution of all or any parts of this manual or product are strictly prohibited and will result in civil liability and criminal charges brought against the violators and their aides.

U.S. Government Required Disclaimer - Commodity Futures Trading Commission. Futures and Options trading has large potential rewards, but also large potential risk. You must be aware of the risks and be willing to accept them in order to invest in the futures and options markets. Don't trade with money you can't afford to lose. This is neither a solicitation nor an offer to Buy/Sell futures or options. No representation is being made that any account will or is likely to achieve profits or losses similar to those discussed on this web site. The past performance of any trading system or methodology is not necessarily indicative of future results.

CFTC RULE 4.41 - HYPOTHETICAL OR SIMULATED PERFORMANCE RESULTS HAVE CERTAIN LIMITATIONS. UNLIKE AN ACTUAL PERFORMANCE RECORD, SIMULATED RESULTS DO NOT REPRESENT ACTUAL TRADING. ALSO, SINCE THE TRADES HAVE NOT BEEN EXECUTED, THE RESULTS MAY HAVE UNDER-OR-OVER COMPENSATED FOR THE IMPACT, IF ANY, OF CERTAIN MARKET FACTORS, SUCH AS LACK OF LIQUIDITY. SIMULATED TRADING PROGRAMS IN GENERAL ARE ALSO SUBJECT TO THE FACT THAT THEY ARE DESIGNED WITH THE BENEFIT OF HINDSIGHT. NO REPRESENTATION IS BEING MADE THAT ANY ACCOUNT WILL OR IS LIKELY TO ACHIEVE PROFIT OR LOSSES SIMILAR TO THOSE SHOWN.

Contents of a guide

1. [Introduction](#)
2. [Getting started](#)
3. Installation of GPS Forex Robot
 - 3.1 [First Method](#)
 - 3.2 [Second Method](#)
4. [Meta Trader 4 Settings](#)
5. [Preparing the GPS Robot to trade](#)
6. [GPS Forex Robot Settings](#)
7. [GPS Forex Robot On-chart Messages](#)
8. [Activation of your Real Money Account](#)
9. [GPS Forex Robot Strategy Test on Alpari UK](#)
10. [Troubleshooting](#)
11. [How to stop trading](#)

1. Introduction

Thank you for joining the GPS Robot team. This manual will help you install, activate, and use your robot for maximum profit and with minimal frustrations.

With the purchase of your GPS Forex Robot expert advisor, you gained access to our member's area, along with this manual and all required robot files available for download there. It is important that you download all required robot files to your computer and save them in a handy place to be able to use them during the installation process. The GPS Forex Robot can be installed in two different ways. To facilitate finding the necessary files for both methods you can check with this list:

For the First method:

- ✓ GPSForexRobotSetup.exe

For the Second method:

- ✓ GPSForexRobotEURUSD.ex4
- ✓ GPSForexRobotEURUSD.dll
- ✓ GPSForexRobotUSDCHF.ex4
- ✓ GPSForexRobotUSDCHF.dll
- ✓ GPSForexRobotEURGBP.ex4
- ✓ GPSForexRobotEURGBP.dll

You can choose only one method, which suits you better. It is also essential that you have these files to proceed with setting up your GPS Forex Robot expert advisor. We recommend saving them to your desktop for your convenience and to start working.

2. Getting started

The first thing you need to do after downloading the robot files is deciding which broker you are going to trade with. For this purpose, we highly recommend [iamFX](http://www.iamfx.com), which is a fair STP broker with market execution. In this manual, we will describe the installation on the example of iamFX. However, should you choose a different broker, don't worry, the GPS Forex Robot works fine with other brokers as well, and the installation is rather similar.

Prior to running your robot on a live account, we recommend you to get acquainted with it on a demo account first. The subsequent pages of this manual describe how to register a demo account.

To open a DEMO account with iamFX, please, go to <https://www.iamfx.com/freedemo.php>. Enter your full name, e-mail address, choose your country and then click the "Submit" button, as shown below.

I am FX First raw spread MT4 broker

[Your Account](#) [VPS Account Login](#) [Support](#)

IamFX home Accounts Trading Platform Education Institutional Services About us Contact

Metatrader 4 Download / Free Demo

Experience the exciting world of currency trading with a free practice account. Register below for unlimited access to the iamFX's MetaTrader 4 platform for the next 60 days, along with real-time executable quotes in 34 currency pairs. Test your strategies with no risk and no obligation.

Read more about iamFX Metatrader 4 trading platform at <http://www.iamfx.com/metatrader4.php>

Please submit the below form and we will send you an email with the download link for the iamFX Metatrader.

All fields are compulsory.

Full name: Email:

Country:

NEW Open New Account

AND EUR USD GBP Your Account

? Live Assistance

FX FOREX Education

Next, you will be transferred to the page where you can download the IamFX Meta Trader 4 platform. A link to this page will also be dispatched to your email, so that if you have to download the platform again anytime in the future, you can quickly access the required page.

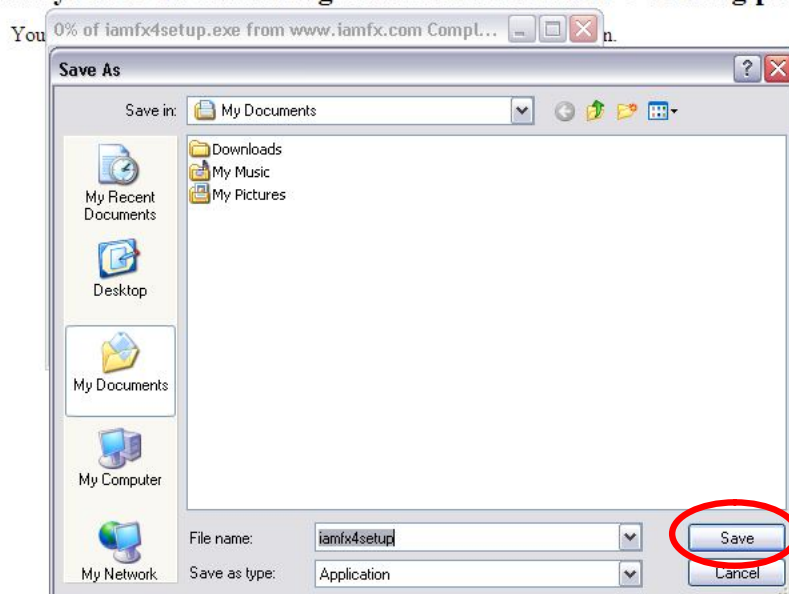
As soon as the page loads on your screen, a dialogue box will appear prompting you to save the setup file to your computer. You can either save it to your computer or resume the installation later or you can run it straight away by clicking on “Run.”

Thank you for downloading IamFX MetaTrader 4 trading platform.



If you decide to save it to your computer, you will also have to select a directory to save the setup program. For your convenience, we recommend you to save it to your desktop.

Thank you for downloading IamFX MetaTrader 4 trading platform.

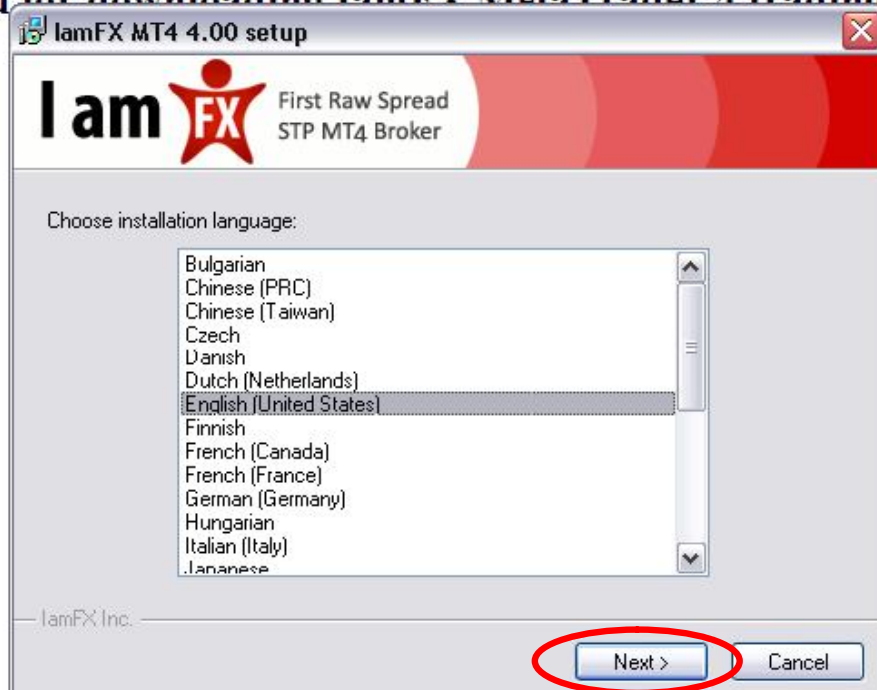


After the installer file downloads to your computer, you will most likely be asked for a permission to run it. This is the Windows built-in security, and you should confirm any messages for the program to be able to install it correctly.

You might also see warnings from your antivirus system. Since such software is heavily coded to prevent reverse engineering, it might be seen as a virus by some security systems, which are, for some reason, unable to detect the difference between such security measures and true malware.

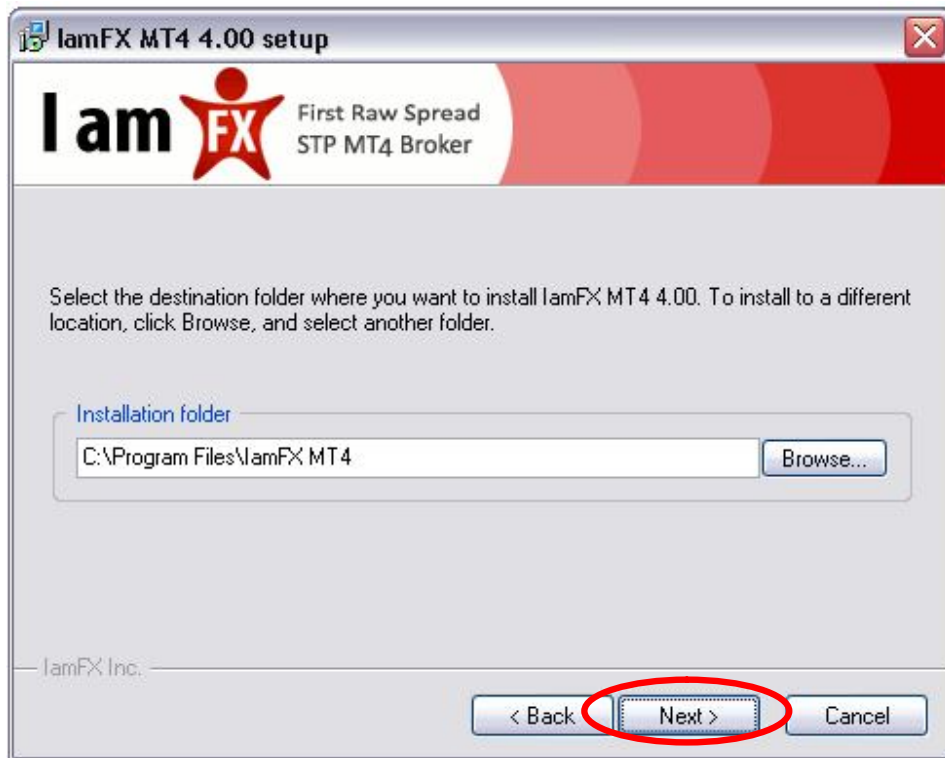
During the installation process, you should be prompted consequently to such windows.

Thank you for downloading IamFX MetaTrader 4 trading platform.



Make sure you select your preferred language and click on “Next.”

Next, you will be prompted to select the path into which you wish to install your Meta Trader 4 platform. We recommend that you leave it set to default, which is the most convenient path option.



Important: Make a note of the installation folder path. You will need to know the location later in order to install any other robots.

Click “Next” after you have decided on your path, and the setup program will place all the necessary Meta Trader 4 files into the selected directory. After the installation is finished, click on “Finish,” and run your Meta Trader 4.

When Meta Trader 4 starts up for the first time, you will need to create a Demo (Practice) account.

Open an Account

Personal details
To open an account, please fill out all the following fields:

Name: min 6 chars

Country: State: min 2 chars

City: min 2 chars Zip code: min 3 chars

Address: min 6 chars

Phone: min 6 chars Email:

Account Type: Currency:

Leverage: Deposit:

I agree to subscribe to your newsletters

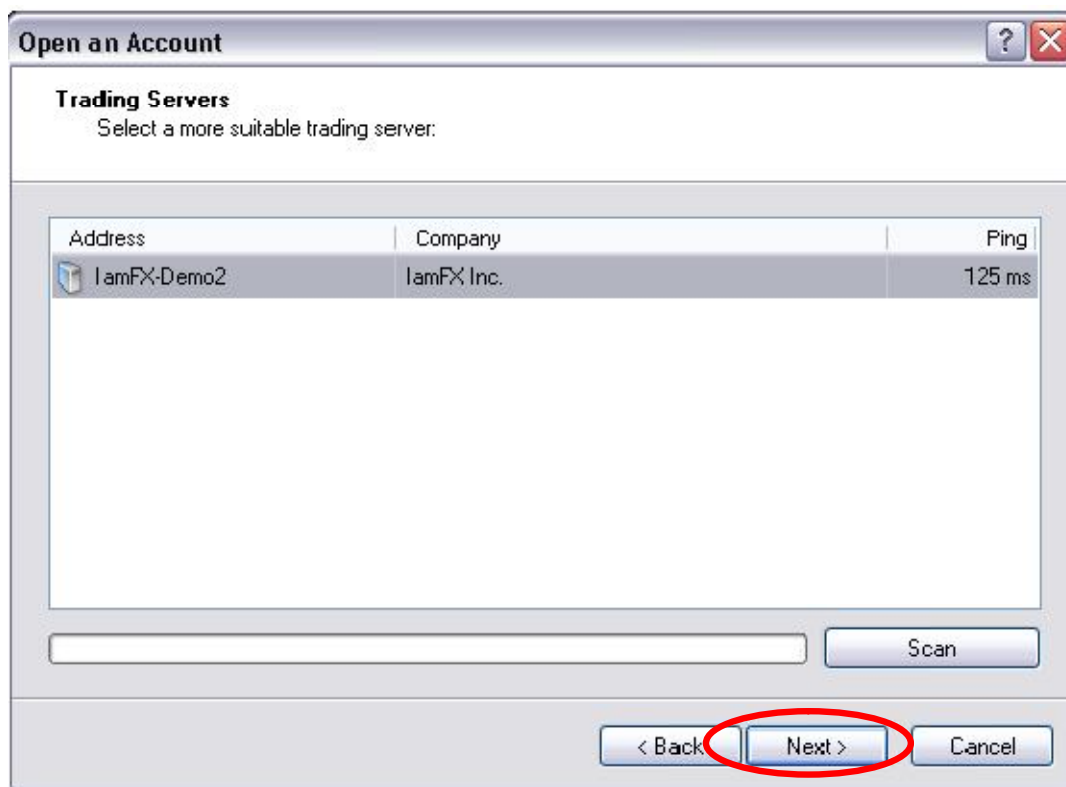
< Back **Next >** Cancel

First, make sure that you provide all of the details shown in red, and check the box “I Agree To Subscribe To Your Newsletters.” Then, select the desired “Deposit” and “Leverage” values. We recommend that you use the same leverage and deposit features that you wish to see on you live account.

Currently, the maximal leverage option for iamFX is 400:1, and minimal deposits start with \$500. You can find additional information about the iamFX conditions by visiting their site at <http://www.iamfx.com>.

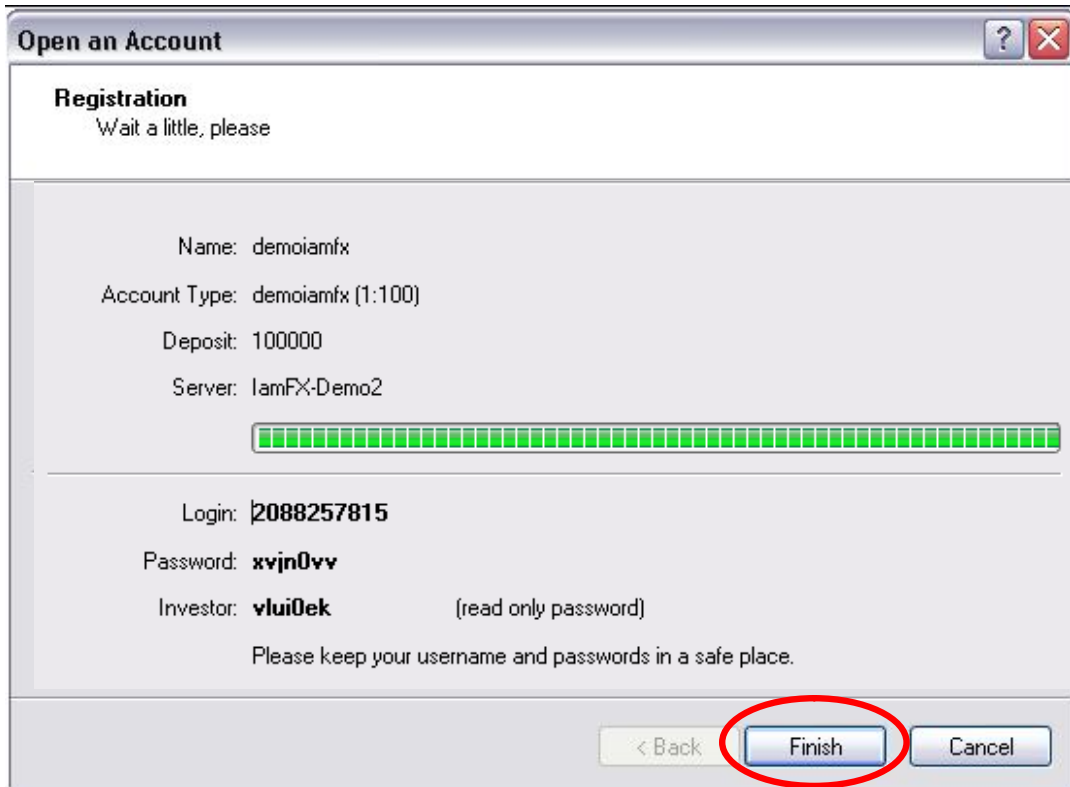
After you fill in all the required fields, click on “Next.”

The following window is designed to select a demo server for your trading. In most cases, there is only one option. However, feel free to select any demo server available and click on “Next.”



After selecting your server, you will be able to access your demo account login details.

We highly recommend making a note of them in order to be able to access your demo account later from other platforms. Do not use the “Investor” password while logging in. With an investor password, you will not be able to trade on your account, as it is a read-only access feature. Investor passwords can be used, for example, if you want to show your account results to a third party, but you will not be able to trade with it!



Finally, click the “Finish” button to complete the account registration process. Normally, you will be logged into your account right after clicking on “Finish.” Should you need to log in again, you can click on “File” > “Login.”

After doing that, please ensure that you **CLOSE** the Meta Trader 4 window. All EA installations should be performed when your trading platform is closed, otherwise you might face a series of different problems in the installation process.

3. Installation of GPS Forex Robot

In this section, we discuss how to install the GPS Forex Robot on your Meta Trader 4 platform. There are two methods and here we have detailed instructions for each method.

3.1 First Method

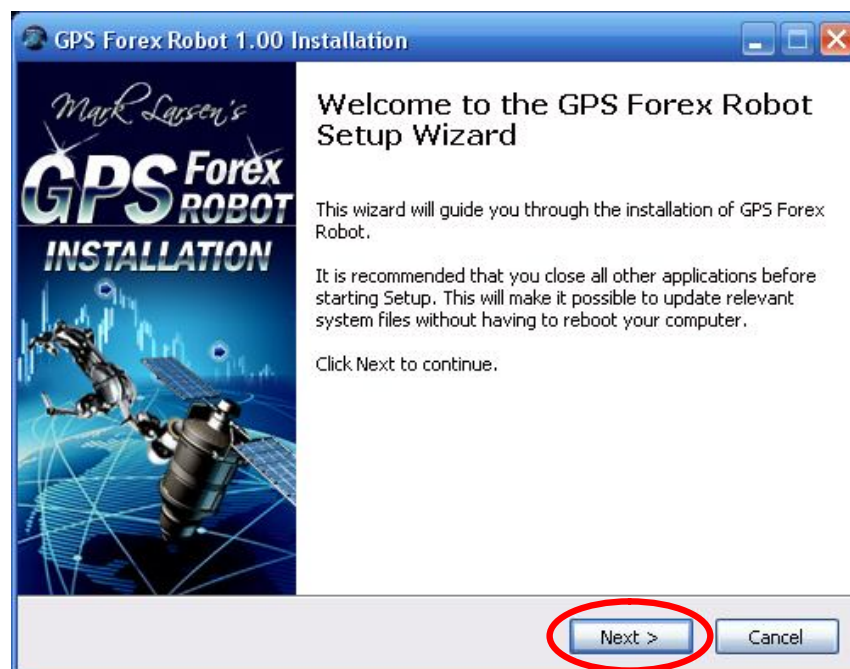
This is the recommended and most convenient method to install the GPS Forex Robot. To install it this way you will need only one file:

- ✓ GPSForexRobotSetup.exe

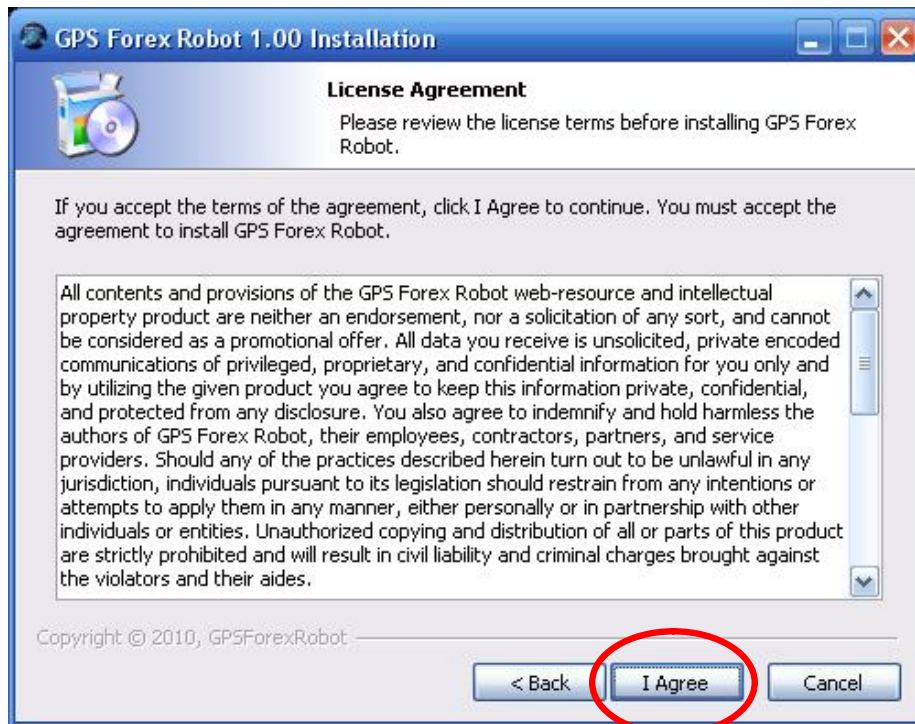
First of all, you will need to find the GPSForexRobotSetup.exe file on your computer and run it by double clicking on the respective file icon:



In the first window of the installation, read the small note about the setup wizard and go to the next step by clicking “Next.”



The second window of the installation will prompt you to agree to the Software License Agreement. Read and confirm it by clicking on “I Agree.”



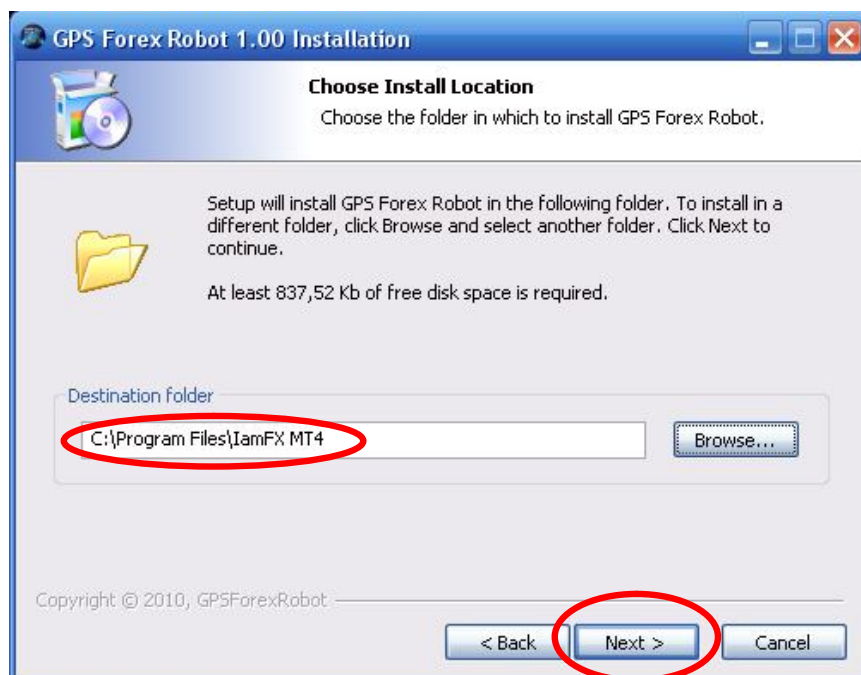
At the next stage, you should choose the Meta Trader 4 folder in which you want to install the GPS Forex Robot by clicking “Browse.”



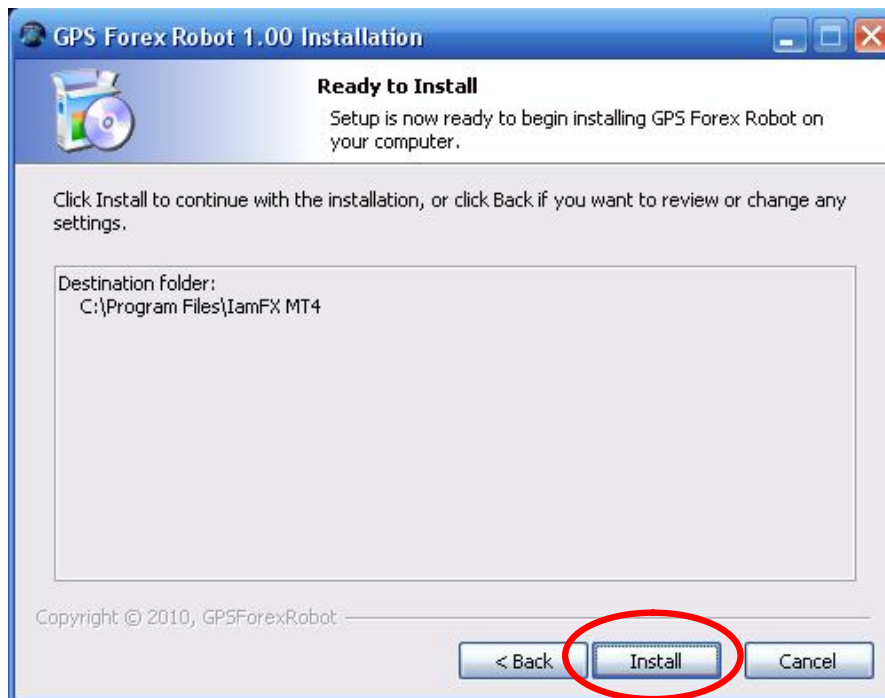
In our case, it's IamFX MT4. Please keep in mind that it is crucial to select only the root folder of your Meta Trader 4 – not the experts or libraries folders. Then go to the next step by clicking “OK.”



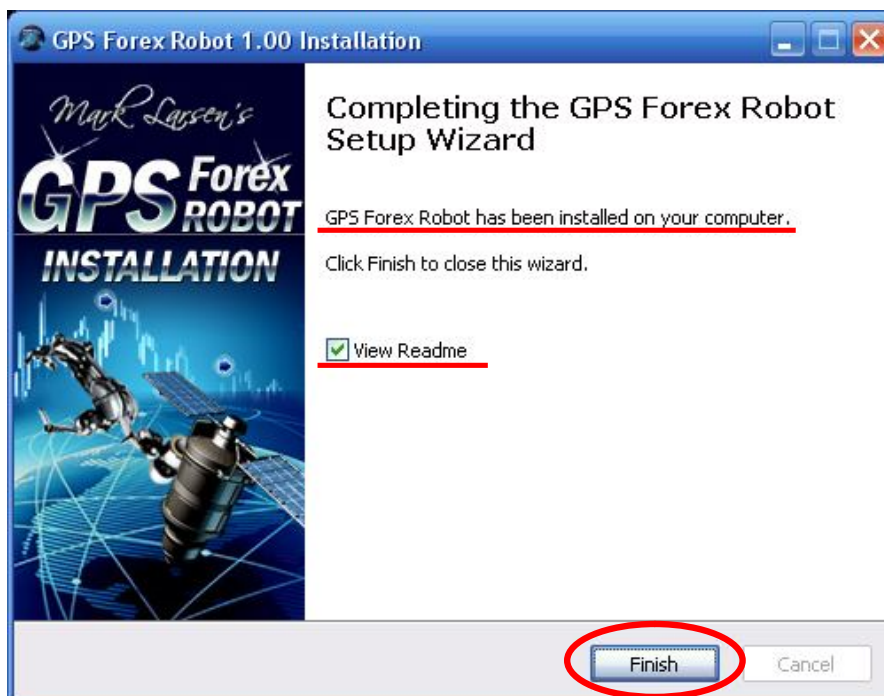
After you choose your Meta Trader 4 folder, make sure it is highlighted and displayed in the field as well and then go to the next step by clicking “Next.”



In the next window, check the destination folder and click on “Install.”



Finally, you will see the “GPS Forex Robot Has Been Installed On Your Computer” window. Please review ReadMe (User Guide) before continuing by clicking “Finish”.



3.2 Second Method

Important: Use the second method of the GPS Forex Robot installation only if the first method doesn't work. Though it is a classic method of robot installation, it is more complicated and is used only in cases where the automated setup doesn't work.

To use this method, you should find the following six files on your computer:

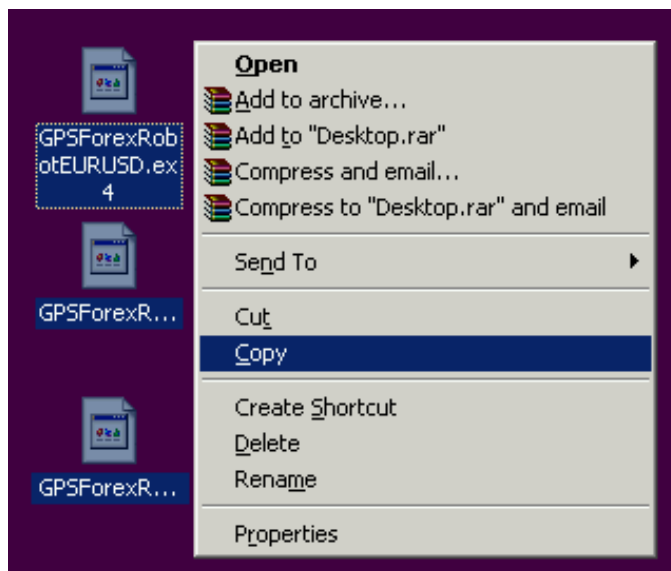
- ✓ GPSForexRobotEURUSD.ex4
- ✓ GPSForexRobotEURUSD.dll
- ✓ GPSForexRobotUSDCHF.ex4
- ✓ GPSForexRobotUSDCHF.dll
- ✓ GPSForexRobotEURGBP.ex4
- ✓ GPSForexRobotEURGBP.dll

Do not open any of these files – they are not executable and should be pasted according to the following instructions:

First of all, you need to copy the next files into the necessary folder:

- ✓ GPSForexRobotEURUSD.ex4
- ✓ GPSForexRobotUSDCHF.ex4
- ✓ GPSForexRobotEURGBP.ex4

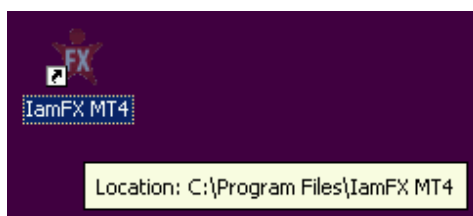
You can begin by clicking on the file icon and selecting “Copy” in the drop-down menu that will pop up.



Next, you will have to remember the folder where your Meta Trader 4 is installed. For IamFX with the default installation options, you can find it at C:/Program Files/IamFX MT4/. This path varies with different brokers, so we highly recommend noting down the path during the respective stage of your Meta Trader 4 installation process.

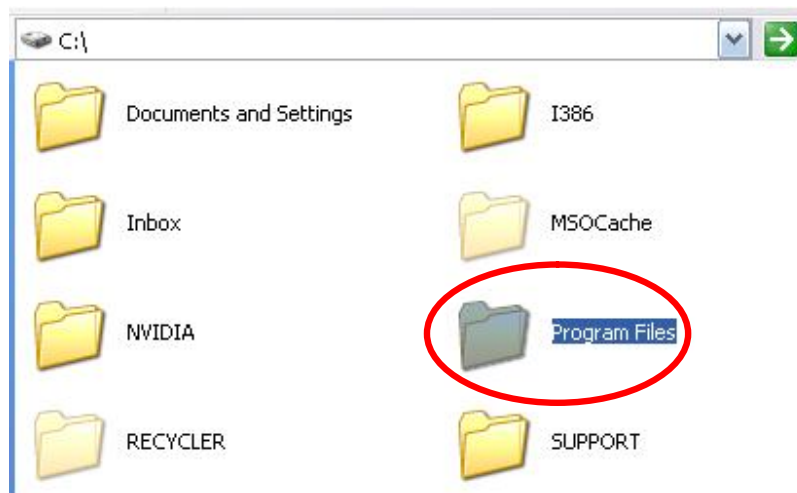
Furthermore, in some cases, and in particular if you are running a 64-bit Windows version, the Program Files folder might look like “Program Files(x86)” or “Program Files(x32).”

If you experience any problems locating your platform, you can move your mouse cursor over the Meta Trader 4 icon for a few seconds, and a pop-up will show you the correct path.

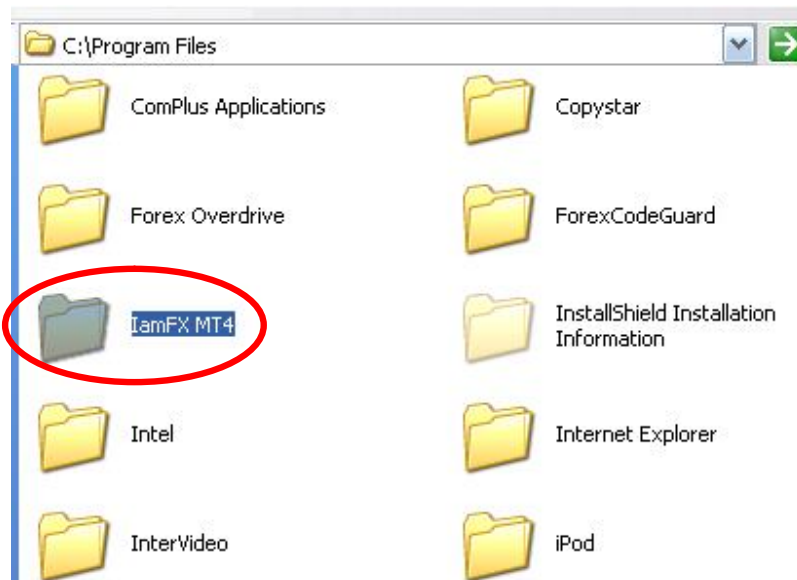


Now that you have found the necessary path to your Meta Trader 4 folder, you can open “My Computer” or “Computer” for Windows 7 or Vista. That should open the built-in Windows Explorer application, which allows you to browse your computer files system.

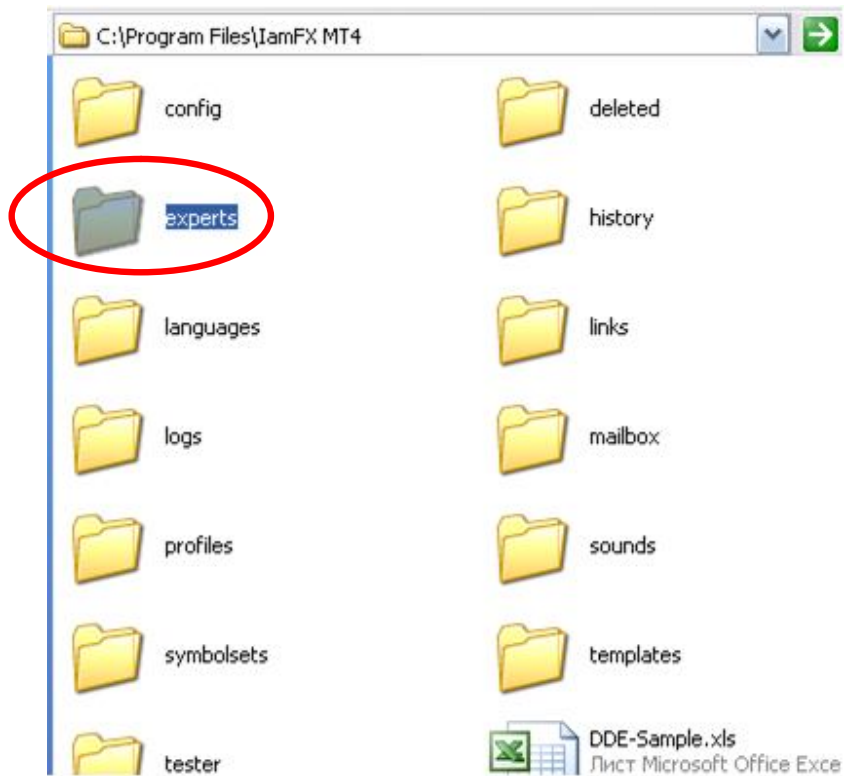
On this example, you can see how we proceed to the “Experts” folder by double-clicking on all subsequent folders specified in the path we determined earlier - Local Drive C:/Program Files.



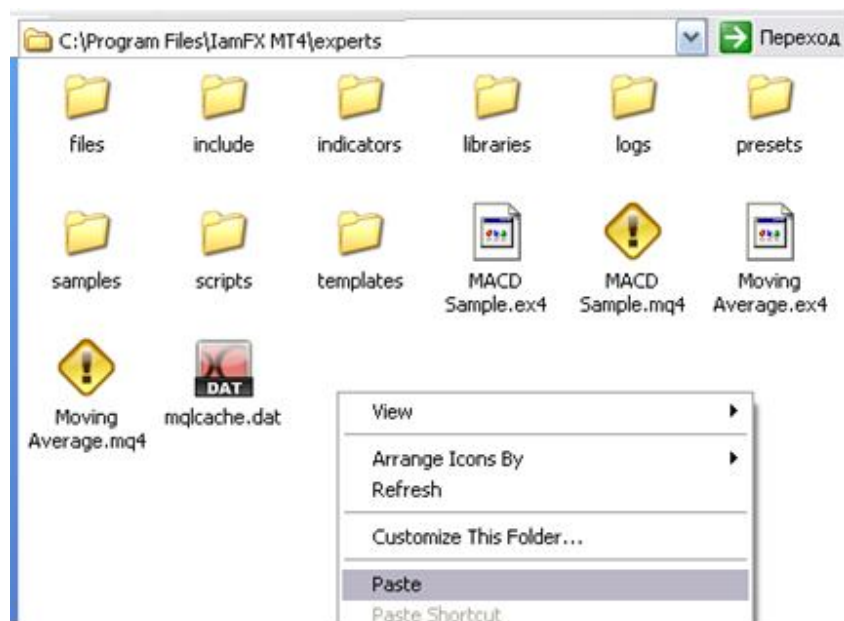
The lamFX MT4 folder:



The “Experts” folder:



After you get to the Meta Trader 4 folder, it is very important that you open the “Experts” folder. Here, you can paste the file by clicking on any empty space and selecting “Paste” from the dropdown menu.



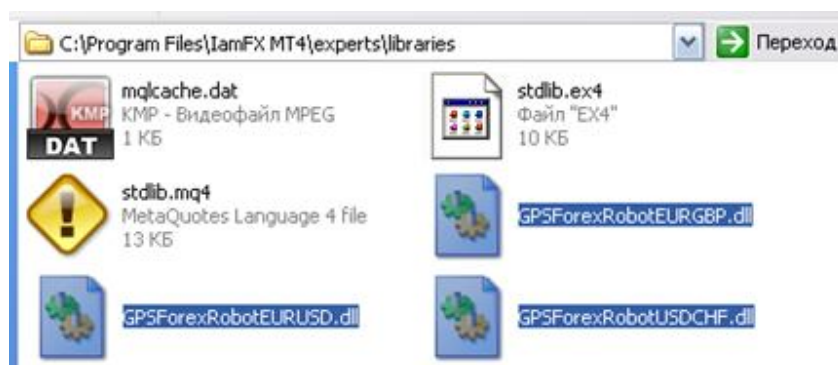
After you paste the next files into the “Experts” folder:

- ✓ GPSForexRobotEURUSD.ex4
- ✓ GPSForexRobotUSDCHF.ex4,
- ✓ GPSForexRobotEURGBP.ex4,

In the same folder locate the “Libraries” folder. Proceed into that folder, and repeat the previous instructions with the next files:

- ✓ GPSForexRobotEURUSD.dll
- ✓ GPSForexRobotUSDCHF.dll
- ✓ GPSForexRobotEURGBP.dll

Like on the picture below:



4. Meta Trader 4 Settings

Once you have finished installing the GPS Forex Robot files, the next thing to do is to launch your lamFX MT4 platform by double-clicking on the lamFX MT4 icon.

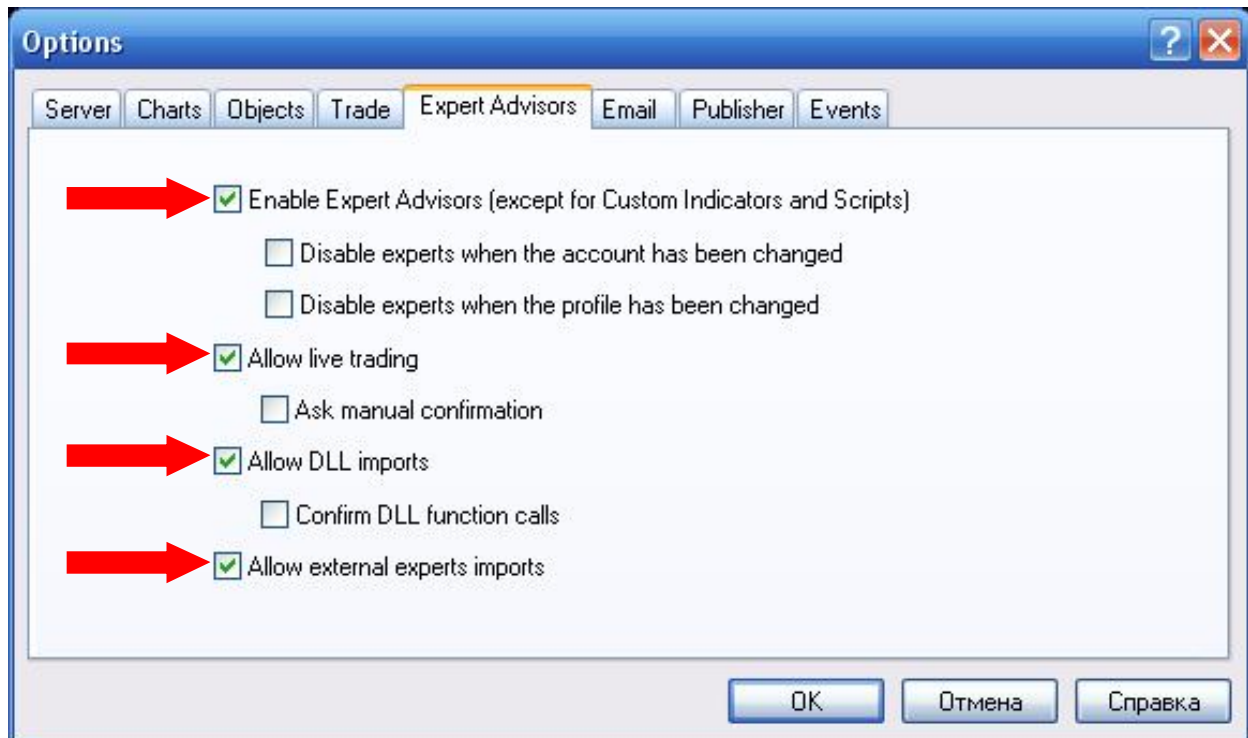


Proceed to Tools → Options menu.



This step is critically important for any Expert Advisors to work on backtests, as well as for saving you from having trouble setting up your EA every time you run it.

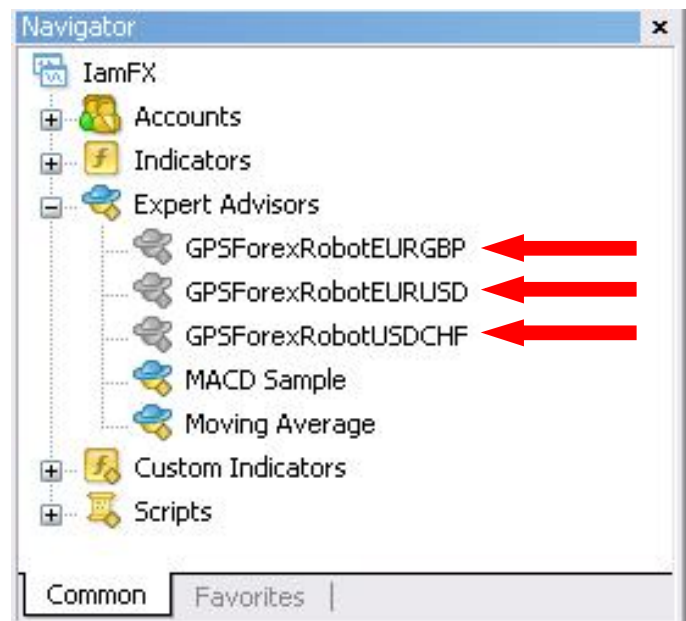
All you have to do here is click on the Expert Advisors tab and ensure that the boxes are checked exactly as shown below.



Do not overlook the “Confirm DLL Function Calls” option, which should be unchecked, otherwise the robot will not be able to function properly. You may also wish to uncheck “Disable Experts When The Account Has Been Changed” and “Disable Experts When The Profile Has Been Changed” options, though this is more for convenience rather than a requirement. After you have checked all needed fields, click “OK.”

5. Preparing the GPS Robot to trade

Having installed the robot, restart your Meta Trader 4 platform and check the Navigator panel on the left-hand side of the Meta Trader 4 window. Clicking the small [+] to the left of “Expert Advisors” will expand that section to display all installed Expert Advisors.



Do not worry that the GPS Forex Robot icons is gray in this list, even though all other icons are colored. This is normal for all commercial Expert Advisors. A colored icon means that you have the “Source Code” for that particular expert.

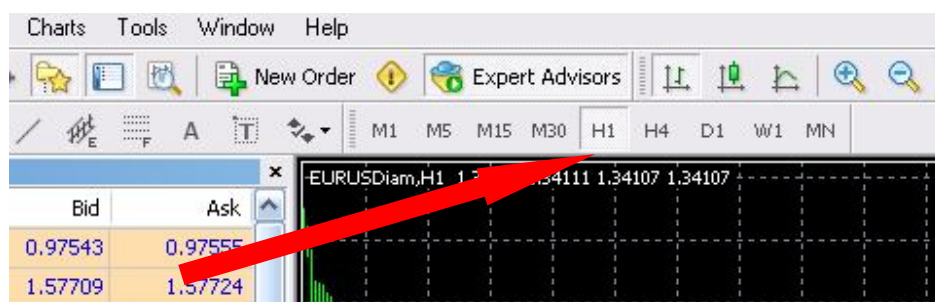
If you cannot find the GPS Forex Robot icons on this list, it is likely that you have installed the robot into an incorrect directory. In that case, we would recommend carefully going through the installation process again. This often happens when you have several Meta Trader 4 platforms installed on your computer. You can check the folders and reinstall the robot into the correct folder or you might have simply forgotten to restart your Meta Trader 4.

After you install all of the robot files, and locate the GPS Forex Robot icon on the Navigator panel. You need to open the chart with the feed necessary for your robot to trade. For GPS Forex Robot, it is the EURUSD, USDCHF and EURGBP charts.

To open a new chart, simply click on “File” and select “New Chart.” You will then be prompted to select the desired currency pair in the drop-down menu that will instantly appear.



After opening the required chart, EURUSD, USDCHF or EURGBP, you can select any timeframe which will be comfortable to you because it's does not matter to the GPS Forex Robot what timeframe you will be using. However, we are recommending that you use the H1 or M15 timeframe. To do this, click on the chart, then on the H1, for example, button in the top part of your Meta Trader 4 window.

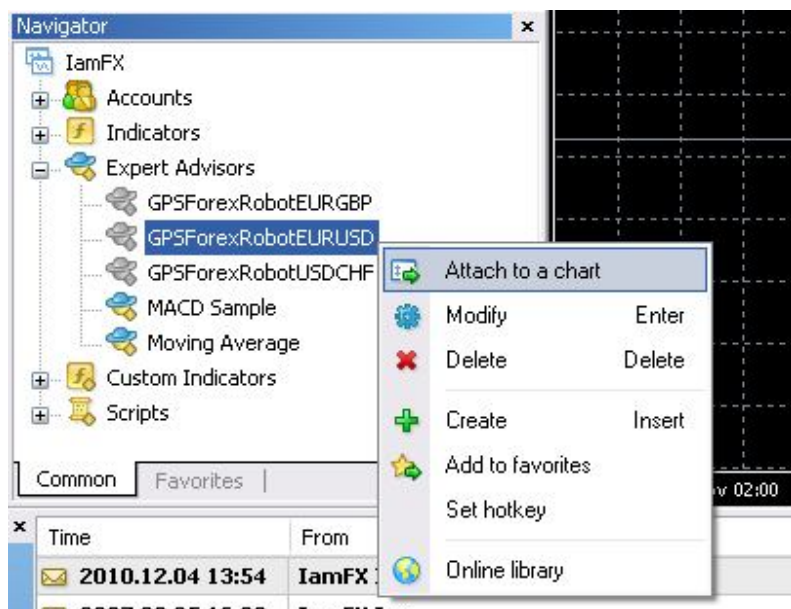


After you have the necessary chart opened and the H1 timeframe selected, you can start attaching the robot to the chart.

In this manual, we will explain how to attach the GPS Forex Robot to the EURUSD chart only, but if you wish to use it with the USDCHF or EURGBP currency pairs as well, you can follow the same instructions for that chart.

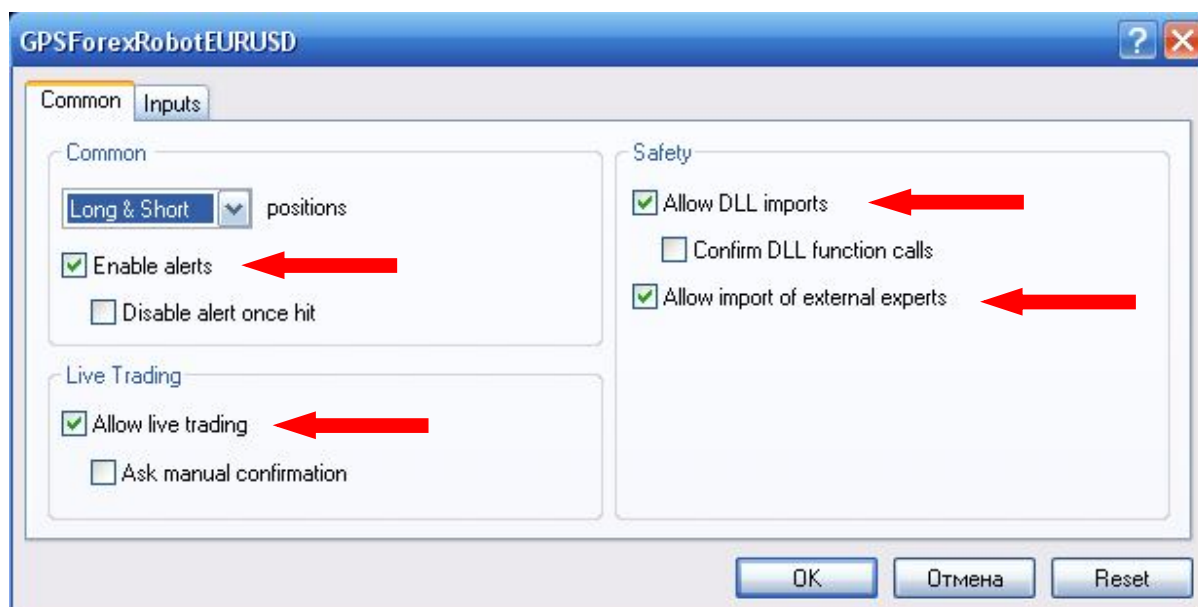
To attach the robot, select the necessary chart and follow the subsequent instructions.

On the Navigator panel, right-click on the GPSForexRobotEURUSD icon and select “Attach To A Chart” in the menu as it is shown below.



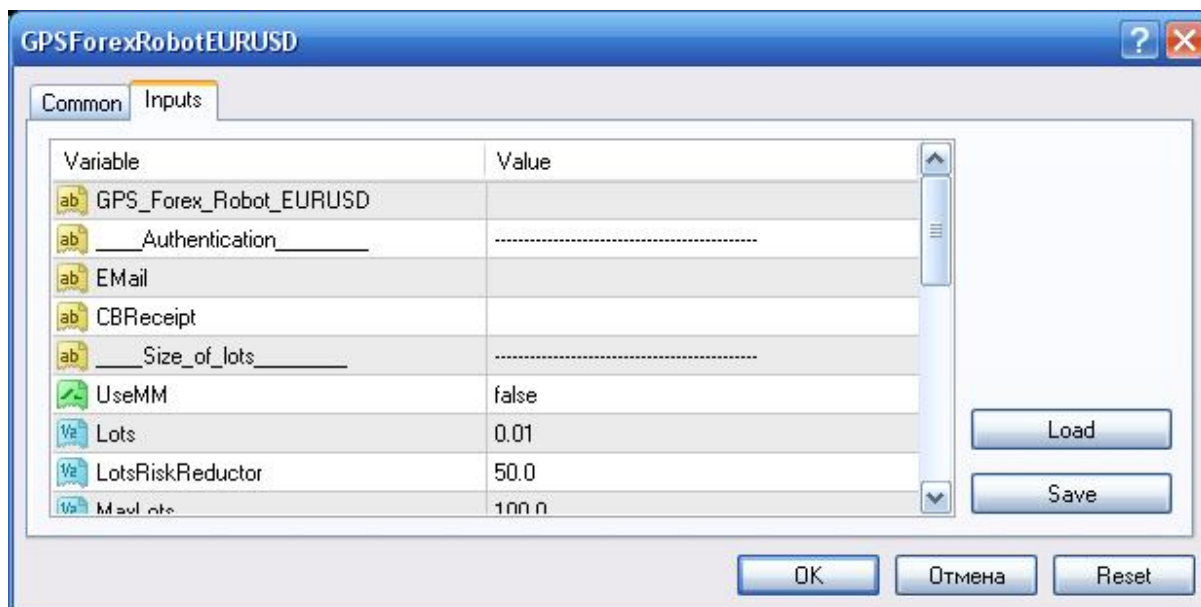
When you attach the robot to the chart, the “Properties” dialog window will open. The dialog window contains two tabs, “Common” and “Inputs.”

The “Common” tab looks like this.



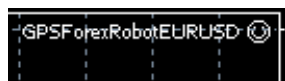
It is crucial that all of the settings highlighted with the red arrow are matching the image above or the GPS Forex Robot will not be able to function properly.

Assuming that everything else is correct, the “Inputs” tab looks like this.

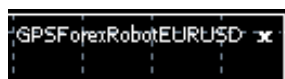


If you scroll down this inputs section, you will be able to see a number of adjustable settings, which are explained in the following several pages of the manual. If you wish to change any of the settings, just double-click in the “Value” field of the desired setting, and enter the new value. To apply the changes, click “OK.” This will restart the robot with the new settings.

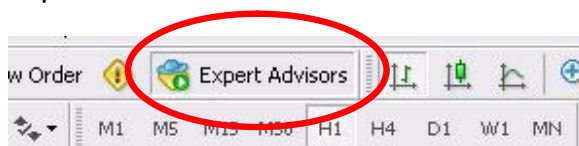
Now we are ready to start trading. Depending on how well you have followed our instructions so far, there will be one of three possible things displayed in the top-right corner of the chart to which the robot is attached.



- A smiley face indicates that the robot is correctly installed and ready to trade.



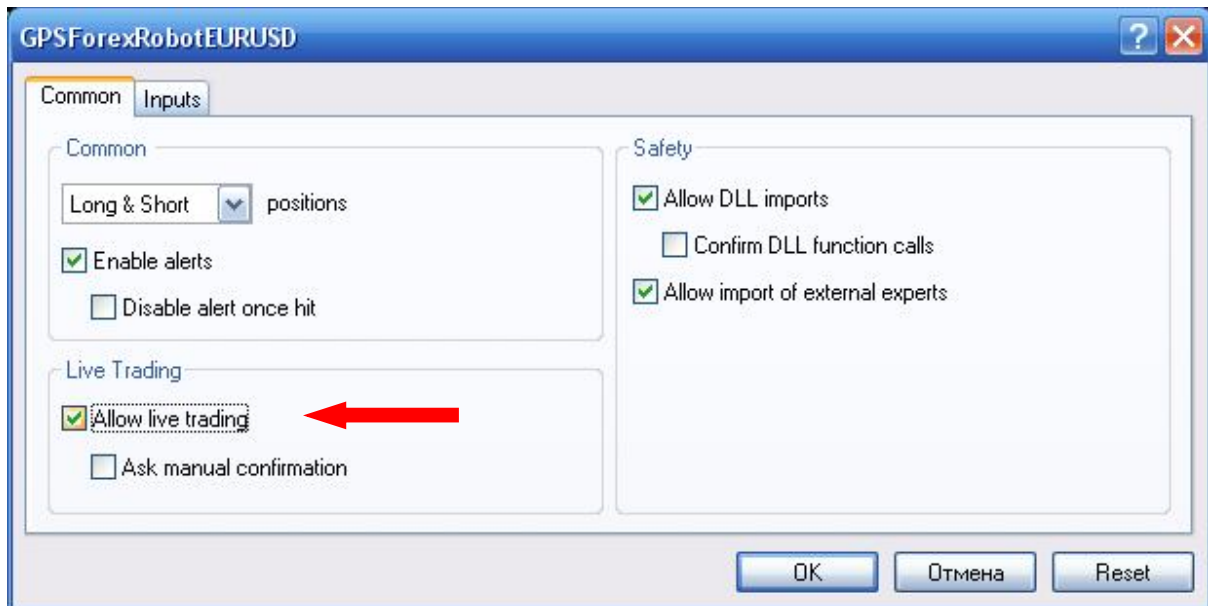
- X means that you forgot to enable the Expert Advisor trading in Meta Trader 4. Make sure that the big Expert Advisors button on the top toolbar of Meta Trader 4 is hit.





- A sad face indicates that you did not allow live trading.

Just press F7 and make sure that the “ALLOW LIVE TRADING” checkbox is checked.



6. GPS Forex Robot Settings

Authentication settings:

Email – This is your e-mail address that you use when you purchased the GPS Forex Robot.

CBReceipt - This is your license number and ClickBank receipt number all in one, and it is used by the GPS Forex Robot to ensure that you are not using a pirated copy of this product. You can find this code in the e-mail message from ClickBank, which was dispatched to you immediately after you made the purchase. It is very important that you have a valid Receipt Code, as without this setting the robot will not be able to function at all.

Size of lots settings:

UseMM - If set to **True**, the robot uses its built-in Money Management System, which will set the trading lot size according to your current deposit size. At the beginning, we recommend you use the Money Management by default setting - it is **False**. If it is set to **False**, it will automatically revert to the fixed lot size specified in the **Lots** setting.

Lots - This is the base lot value that will be used for your current account.

Important: Use 0.01 lot size for every \$100 of your account. For example, if you have a deposit of \$500, you should set the value of the lot size for every expert at 0.05, if you have a deposit of \$1000, the lot size value should be 0.1.

LotsRiskReductor - This is the value of risks that will be used when the **UseMM** setting is set to **True**. In general, this is the percentage value of the Free Margin used to open the position.

MaxLots - Maximum lot size.

General Options:

AutoGMTOffset - When it set to **True** (default), the robot will calculate the GMT offset of your broker's server automatically. This is often the safest approach as it can automatically adjust to Daylight Savings. Unfortunately, this is not possible when you're using the Strategy Tester and a manually specified value is therefore required in order to achieve the correct backtest results. We highly recommend setting it to **True**.

GMTOffset – This defines the time offset of your broker in relation to GMT. If in doubt, your broker will confirm their GMT offset to you upon your inquiry. This parameter is primarily used for Strategy Testing or in the event that the automatic computation of the GMT Offset is not appropriate.

Other settings:

ExpertComment - The comment that will be written when the GPS Forex Robot will make trading operations.

ColorBuy – This is the color of the arrow that will be drawing on the chart when the GPS Forex Robot will be in the Buy mode.

ColorSell – This is the color of the arrow that will be drawing on the chart when the GPS Forex Robot will be in the Sell mode.

SendEmail - By using this setting, you can setup Meta Trader 4 to send you emails about the new trading operations of the GPS Forex Robot. You can configure these email settings in Meta Trader 4. For this, go to Tools -> Options -> Email. Read the Meta Trader 4 help for more information on this setting.

SoundAlert - Play sound when the GPS Forex Robot makes a trading.

WriteLog - Writes comments to the Log.

WriteDebugLog - Writes comments to the Journal of Meta Trader 4.

7. GPS Forex Robot On-chart Messages

If you installed the GPS Forex Robot correctly, the following on-chart message should automatically appear in the top left part of your chart.

```
GPS FOREX ROBOT
www.gpsforexrobot.com

AUTHENTICATION STATUS:
Authenticated [Trades are available]
Thank you for joining the GPS Robot Team!

GENERAL INFORMATION:
Broker Company: IamFX Inc
Terminal Company: IamFX Inc
Server Name: IamFX-Demo2
Current Server Time: 11:41:04

ACCOUNT INFORMATION:
Account Name: demoiamfx
Account Number: 2088257815
Account Type: Demo
Account Leverage: 1:100
Account Balance: 100000.00
Account Equity: 100000.00
Account Floating P/L: 0.00
Account Currency: USD

ADDITIONAL INFORMATION:
Current Spread: 0.9
Maximum Spread: 1.1
Free Margin: 100000.00
Used Margin: 0.00

GMT SETTINGS:
GMT Offset: 0 (automatic)
```

Authentication status:

Authenticated - This message will display if the robot has verified the authentication information successfully and is functioning properly.

General information:

Broker Company - Your broker company name.

Terminal Company - Your terminal company name.

Server Name – This is the name of the server that is currently being used by your Meta Trader 4 terminal.

Current Server Time - This displays the current time of the server that is currently being used by your Meta Trader 4 terminal.

Account information:

Account Name - The name of your current account.

Account Number - The number of your current account.

Account Type - The type of your current account (Demo or Real).

Account Leverage - The leverage of your current account.

Account Balance - The balance of your current account.

Account Equity - The equity of your current account.

Account Floating P/L - The current floating P/L for all open trades of your current account.

Account Currency - The currency of your current account.

Additional information:

Current Spread - The value of the spread for the current open chart of the currency pair, for example it is the EURUSD on the picture above.

Maximum Spread - The maximum value of the spread.

Free Margin - The value of the current free margin for your current account.

Used Margin - The value of the margin currently being used for your current account.

GMT Settings:

GMT Offset - The current value of the GMT Offset of your broker, use this value for Strategy Testing.

8. Activation of your Real Money Account

The GPS Forex Robot License is valid for the Activation of an unlimited number of Demo trading accounts, but only for one Live Real Money account.

If you set your copy of the GPS Forex Robot on the Real Money Account, you will see next message on the chart:

```
GPS FOREX ROBOT  
www.gpsforexrobot.com  
  
AUTHENTICATION STATUS:  
Authentication Failed [Invalid Real Money Account Number]  
[Trades are not available]
```

To activate your Real Money Account, you should go to the <http://gpsforexrobot.com/memberarea/licenses/> where you will see a field with your ClickBank Receipt and Your Live Real Money Account. Please enter the number of your Real Money Account in the appropriate field and click "Change Live Account."

GPS Forex Robot Member Area

Home Webinar Bonuses Downloads **Licenses** FAQ Video Tutorials Support Profile LogOut

Licenses

You are allowed to use each ClickBank Receipt only on One Live account. If you want to change assigned Live account, please use the form near used receipt number.

Here you can see your GPS Forex Robot Parametres. You should input these parametres in your EA copy for trade on live money account. Also you can change your live money account.

Your ClickBank Receipt	Your Live Money Account
CR123456	<input type="text" value="0"/>
	Change Live Account

You should change your account number only for Live Money Account. For demo account you should just set up GPS Forex Robot Parameters: E-Mail and ClickBank Receipt code.

Next, you will see the confirmation “Account Number Has Been Successfully Changed!”


Your ClickBank Receipt	Your Live Money Account
	<input type="text" value="123456"/>

[Change Live Account](#)

 **Account number has been successfully changed!**

After that please set your copy of the GPS Forex Robot on the Real Money Account again, and you will see all on chart messages, where in the “Account Type” you will see “Real.”

```
Account Type: Real
Account Leverage: 1:200
```



Now the GPS Forex Robot is ready to start trading on your Real Money Account!

9. GPS Forex Robot Strategy Test on Alpari UK

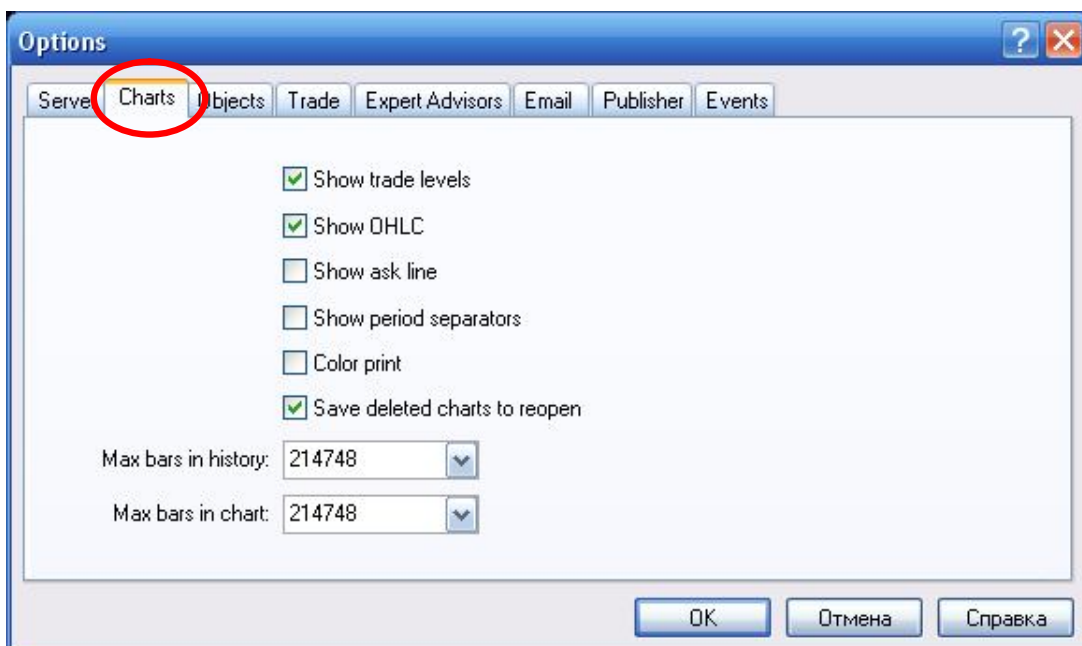
In this section, we consider how do the backtests, tests on the historical data, of GPS Forex Robot on the Alpari UK brokerage.

If you not have the Meta Trader 4 platform of Alpari UK Brokerage, you can download the setup file of it here.

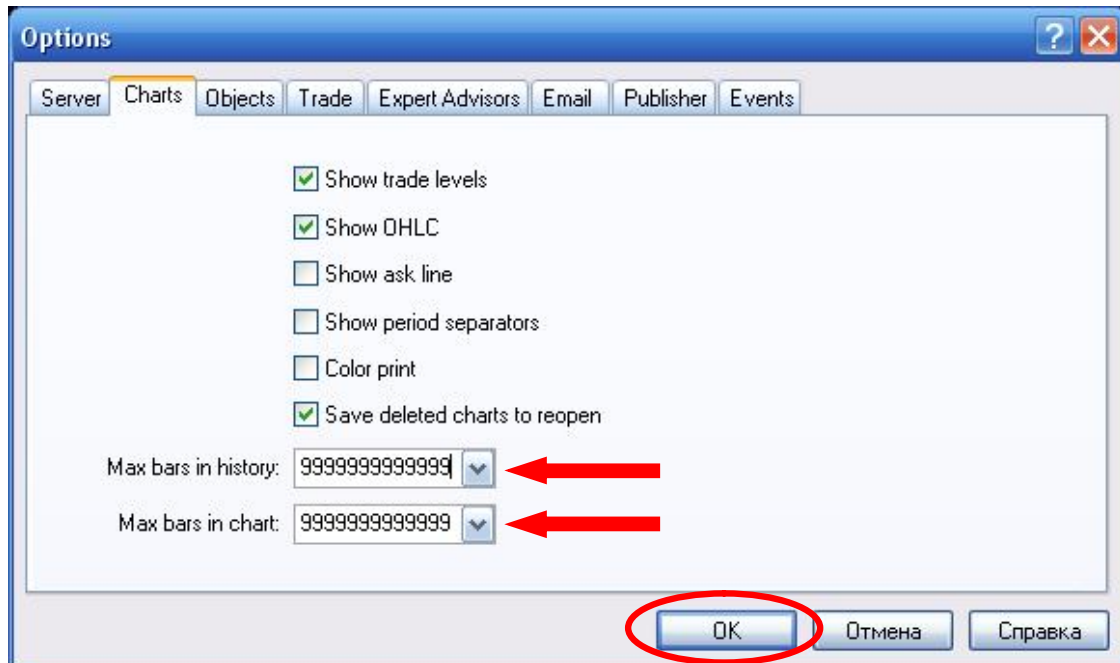
http://www.alpari.co.uk/en/trading_platforms/metatrader4/download.html

If you already have the Meta Trader 4 platform of Alpari UK Brokerage, you should first download the historical data for backtesting. To do so, follow these instructions.

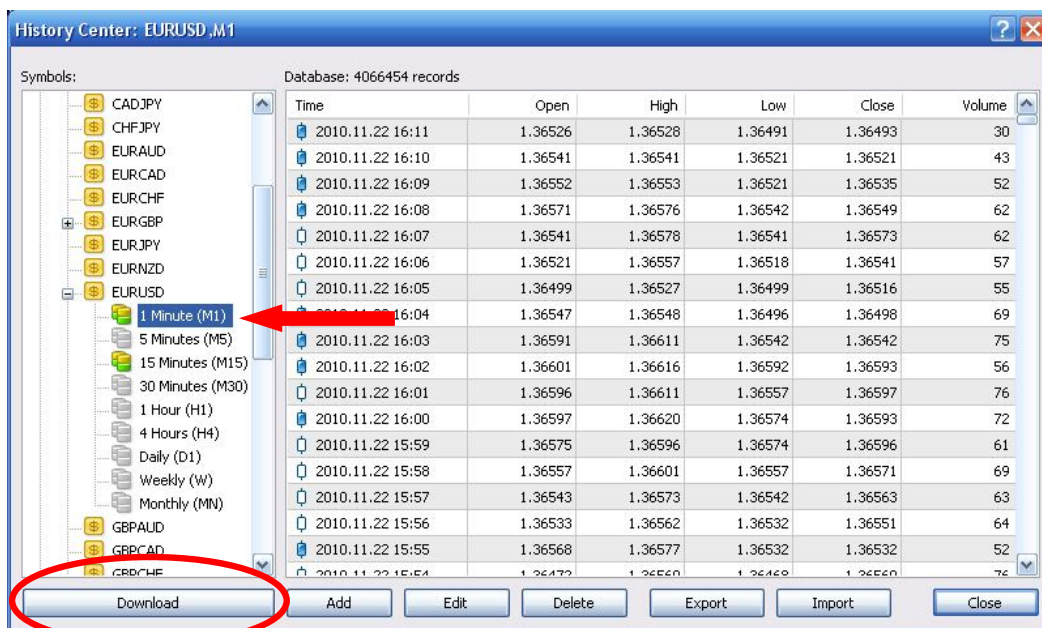
1. Launch the Meta Trader 4 platform.
2. Next go to Tools -> Options and you will see window with the settings.
3. Choose the Charts tab.



4. In the fields “Max Bars In History” and “Max Bars In Chart,” change the current values to “999999999999” and then click “OK.”

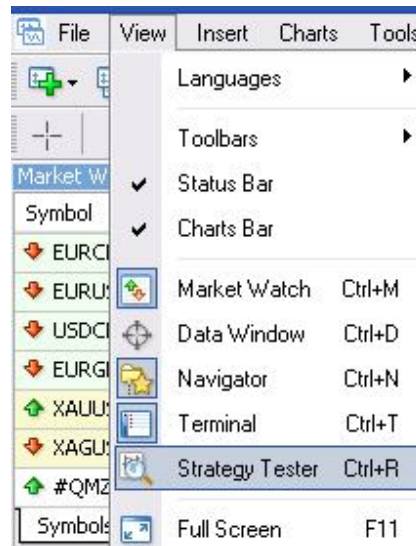


5. Next, go to the Tools -> History Center and in the opened window find the “EURUSD” currency. Double click the “EURUSD M1” button and then click the “Download” button below to download history data from MetaQuotes.

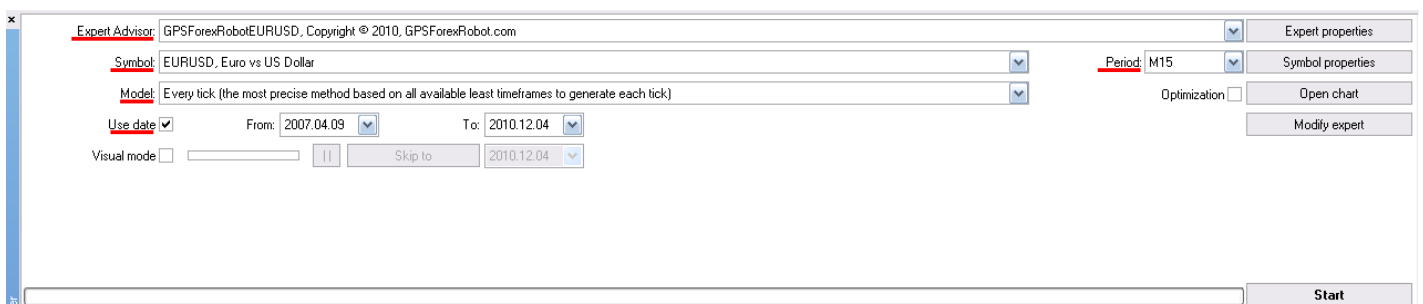


6. Do the same for the other timeframes, M15, M30 and so on, when the download is complete, close the “History Center” window.

7. Now, you are ready to do the backtests and you should go to View -> Strategy Tester.

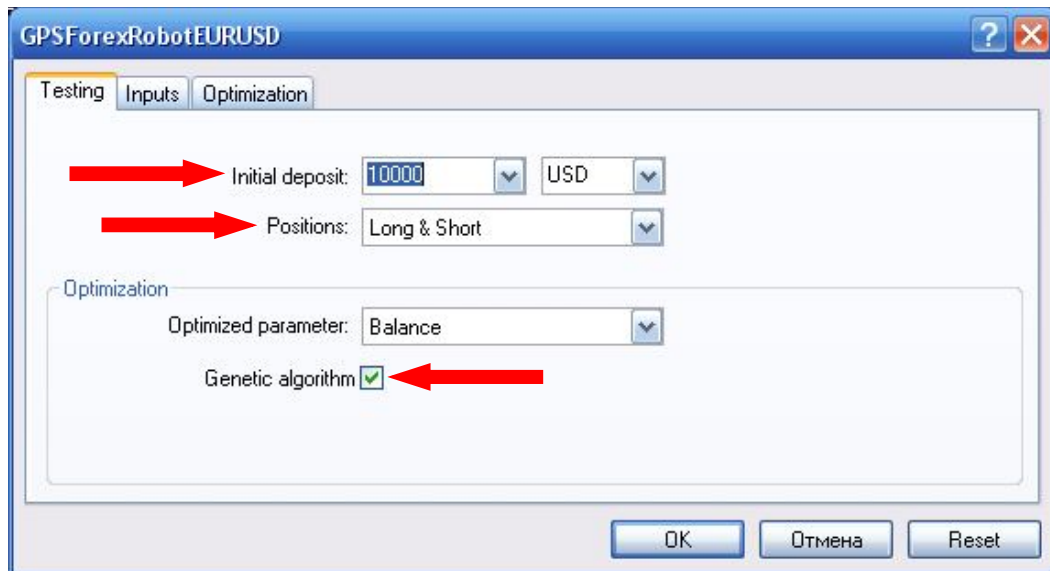


8. From the opened window in the “Expert Advisor” menu, choose the “GPSForexRobotEURUSD,” in the “Symbol” menu choose the “EURUSD pair,” and for the “Model” menu choose “Every Tick” setting. After that, choose “Use Date” and set it from 04-09-2007 (for the EURUSD pair) to today’s date and in the “Period” menu choose the timeframe, we recommend M15 or H1.

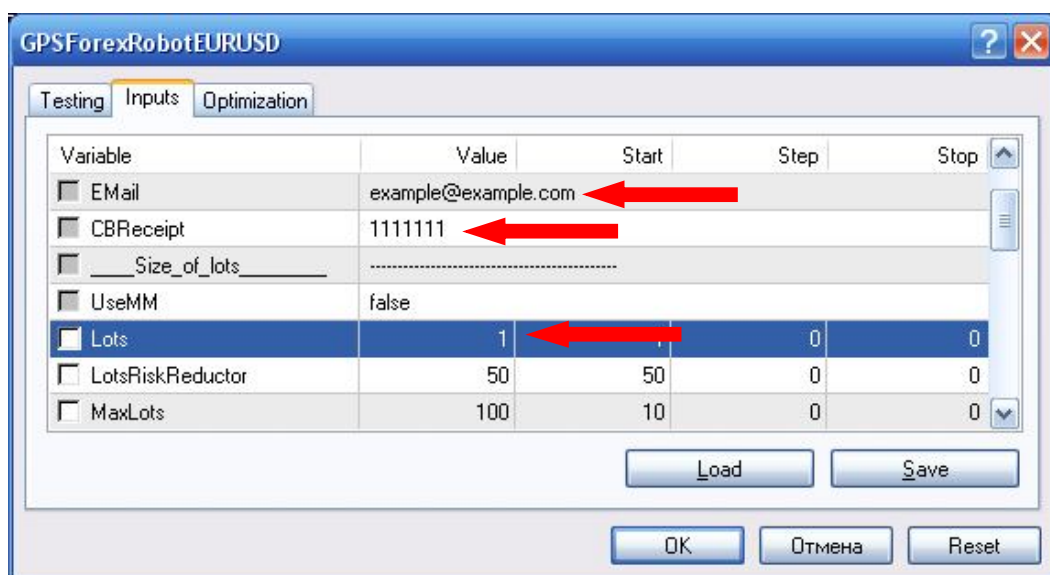


Important: Don't do the backtests on the weekends because in this time the spread is not a market value.

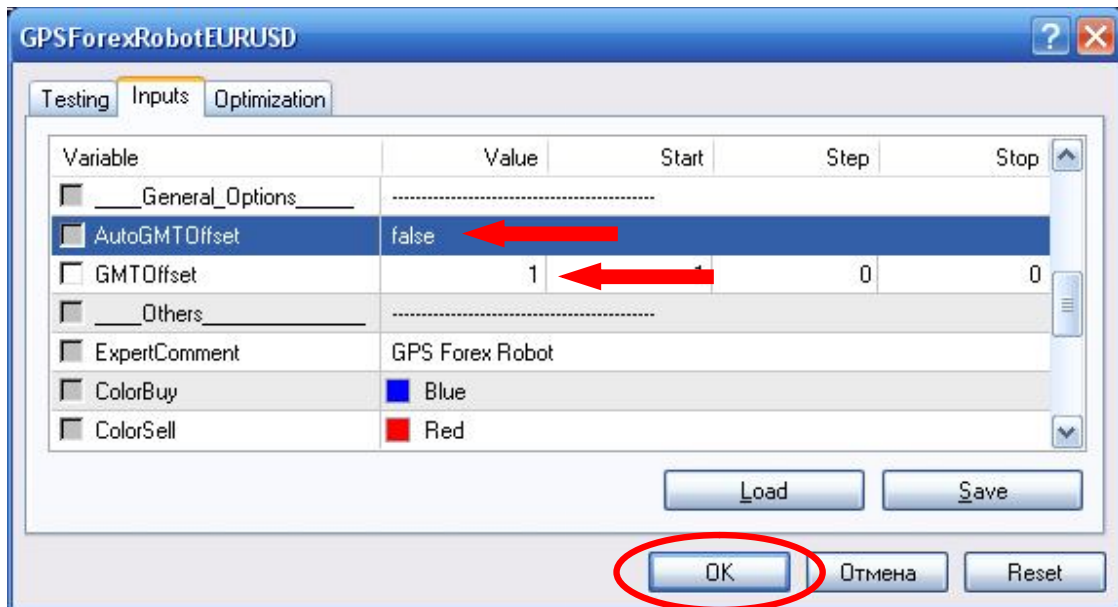
9. Click the “Expert Properties” button and in the opened window, choose the Testing tab. Type in the “Initial Deposit” menu, for example \$10,000. In the “Positions” menu choose “Long and Short” and check “Genetic Algorithm.”



10. Next, choose the Inputs tab. Type your Email and CBReceipt number, after that you should change the lot size. As you should remember, the maximum value of the lot size is 0.01 for every \$100 of your deposit. In the last step we chose the \$10,000 deposit, so we should type the lot size is 1, because: $\$10,000/\$100 * 0.01 = 1$.



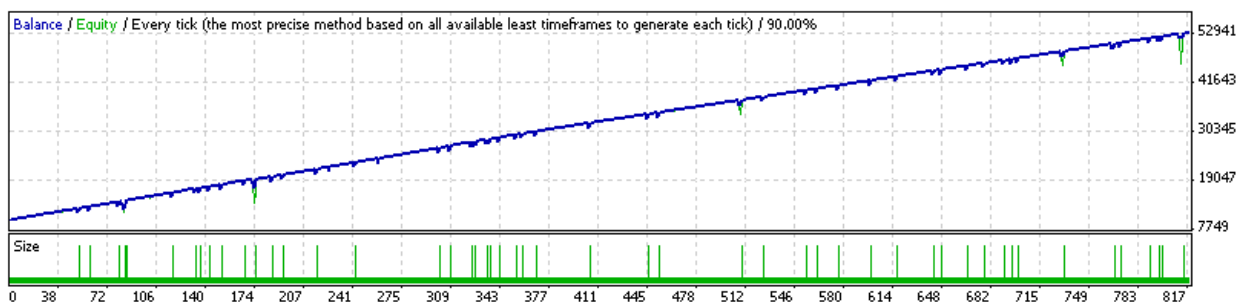
Then you should to set the “AutoGMTOffset” to False, and type the value of brokers gmt offset in the “GMTOffset” menu, for Alpari UK, it is 1 (you can find this value on the chart in the GMT SETTINGS menu) and finally click “OK.”



11. Now it's time to do the backtests, for it you should just click “Start” button.



12. Finally, you will see the results of the backtest.



10. Troubleshooting

The expert advisor is not working

First of all, please make sure that all installation steps from the manual were performed correctly. If you did not locate any errors in the installation process, have a look under the “Experts” and “Journal” tabs in the “Terminal” window of your Meta Trader 4 to identify your problem.

DLL calls are not allowed

Please, make sure that under the Tools->Options->Expert advisors tab of your Meta Trader 4 platform, the “Allow DLL Imports” box is checked. If not, check it, confirm the changes, and reattach your robot to the chart. Also, make sure that “Allow Live Trading” is checked and “Confirm DLL Function Calls” is unchecked, as these settings are also crucial for your robot’s trading.

Authentication Failed: [Wrong E-Mail or CBReceipt]

Please, make sure that you have entered your e-mail address and purchase receipt number correctly – if not, click the smiley face icon or press F7 to open the “Inputs” tab and enter the code again.

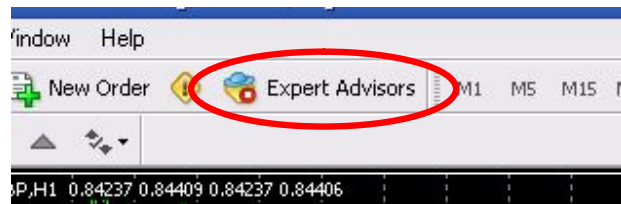
Other problems

If you are experiencing any issues that are not covered in the user’s manual, please send your message to the support team at support@gpsforexrobot.com, providing as much detail as possible. Any screenshots or additional information will be appreciated.

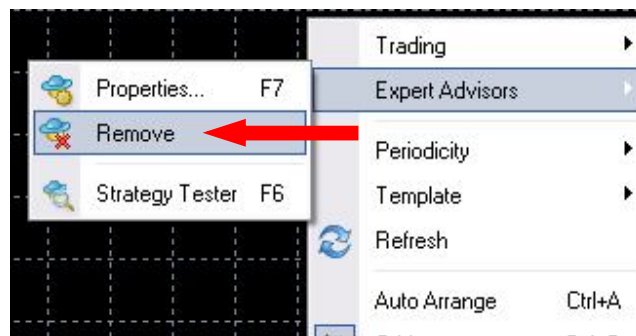
11. How to stop trading

There are several ways to stop the robot's trading.

1) In case you use several robots on your account and want to completely stop the trading of all EAs, click the green "Expert Advisors" button in the toolbar. Please, be aware that this will also stop any other Expert Advisors that you may be running on your account.



2) If you want to remove only one robot, you can do so by clicking on the Smiley Face and choosing "REMOVE" in the Expert Advisors menu.



3) If you don't want to remove the EA, you can simply disable its live trading ability by pressing F7 and un-checking the "Allow Live Trading" checkbox.

